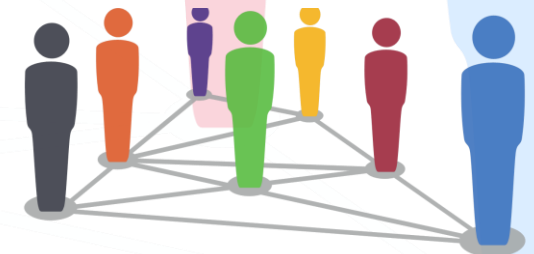


AACSB & ACBSP Accredited Minority Institutions (Sources: AACSB Int'l (2013), The Chronicle of Higher Education (2010), ACBSP (2013))

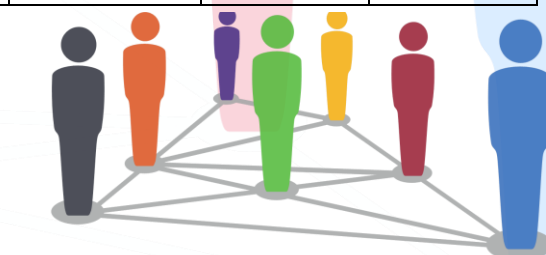
STATE	NAME OF INSTITUTION	CITY	TYPE	AACSB ACCREDITED	ACBSP ACCREDITED	GRAD. RATE (4-yr)	GRAD. RATE (6-yr)
Alabama	Alabama State University	Montgomery	HBCU	No	Yes	6.6%	24.0%
	Bishop State Community College	Mobile	HBCU	No	Yes
	Gadsden State Community College	Gadsden	HBCU	No	Yes
	Lawson State Community College	Bessemer	HBCU	No	Yes
	Oakwood University	Huntsville	HBCU	No	Yes	22.5%	39.6%
	Tuskegee University	Tuskegee	HBCU	Yes (B)	No	17.5%	46.4%
Arkansas	Philander Smith College	Little Rock	HBCU	No	Yes	2.4%	16.5%
California	California State Polytechnic University	Pomona	HSI	Yes (B)	No	19.5%	56.6%
	California State University-Bakersfield	Bakersfield	HSI	Yes (B)	No	17.2%	43.0%
	California State University-Fresno	Fresno	HSI	Yes (B)	No	16.9%	50.6%
	California State University-Fullerton	Fullerton	HSI	Yes (B&A)	No	16.5%	51.4%
	California State University-Long Beach	Long Beach	HSI	Yes (B)	No	12.3%	54.0%
	California State University-Los Angeles	Los Angeles	HSI	Yes (B)	No	8.0%	37.4%
	California State University-Northridge	Northridge	HSI	Yes (B)	No	14.2%	47.9%
	California State University-San Bernardino	San Bernardino	HSI	Yes (B)	No	13.1%	44.0%
	California State University-Stanislaus	Turlock	HSI	Yes (B)	No	23.4%	49.5%
	Notre Dame de Namur University	Belmont	HSI	No	Yes	42.4%	48.4%
University of California-Riverside	Riverside	HSI	Yes (B)	No	45.5%	68.1%	
Woodbury University	Burbank	HSI	No	Yes	27.6%	52.8%	

Last revised: 10 December 2013



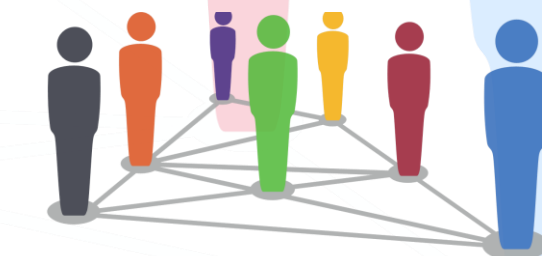
STATE	NAME OF INSTITUTION	CITY	TYPE	AACSB ACCREDITED	ACBSP ACCREDITED	GRAD. RATE (4-yr)	GRAD. RATE (6-yr)
Colorado	Colorado State University	Fort Collins	HSI	Yes (B)	No	36.7%	63.9%
District of Columbia	Howard University	Washington	HBCU	Yes (B&A)	No	47.8%	69.1%
Delaware	Delaware State University	Dover	HBCU	Yes (B)	No	19.4%	39.2%
Florida	Florida A&M University	Tallahassee	HBCU	No	Yes	12.7%	40.6%
	Florida International University	Miami	HSI	Yes (B&A)	No	19.2%	45.8%
	Florida Memorial University	Miami Gardens	HBCU	No	Yes	5.6%	36.2%
Georgia	Clark Atlanta University	Atlanta	HBCU	Yes (B)	No	27.4%	43.1%
	Morehouse College	Atlanta	HBCU	Yes (B)	No	35.9%	56.7%
	Paine College	Augusta	HBCU	No	Yes	9.9%	26.2%
	Savannah State University	Savannah	HBCU	Yes (B)	No	12.9%	34.7%
Kentucky	Kentucky State University	Frankfort	HBCU	No	Yes	12.1%	24.8%
Louisiana	Grambling State University	Grambling	HBCU	Yes (B)	No	10.4%	26.9%
	Southern University and A&M College	Baton Rouge	HBCU	Yes (B)	No	5.3%	21.2%
	Southern University at New Orleans	New Orleans	HBCU	Yes (B)	No	0.0%	4.0%
	Xavier University of Louisiana	New Orleans	HBCU	No	Yes	23.1%	34.0%
Maryland	Bowie State University	Bowie	HBCU	No	Yes	15.0%	37.3%
	University of Maryland Eastern Shore	Princess Anne	HBCU	Yes (B)	No	18.0%	31.5%
	Morgan State University	Baltimore	HBCU	Yes (B&A)	No	11.5%	31.5%
Mississippi	Jackson State University	Jackson	HBCU	Yes (B)	No	20.1%	40.3%
	Mississippi Valley State University	Itta Bena	HBCU	No	Yes	13.7%	27.2%
Missouri	Harris-Stowe State University	St. Louis	HBCU	No	Yes	3.3%	13.3%

Last revised: 10 December 2013



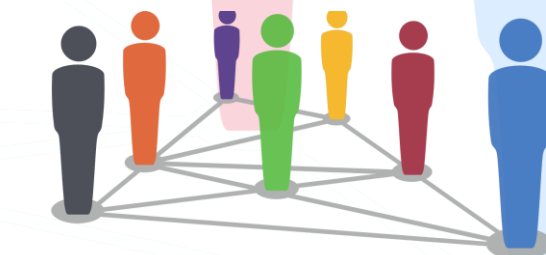
STATE	NAME OF INSTITUTION	CITY	TYPE	AACSB ACCREDITED	ACBSP ACCREDITED	GRAD. RATE (4-yr)	GRAD. RATE (6-yr)
	Lincoln University of Missouri	Jefferson City	HBCU	No	Yes	9.9%	23.1%
New Jersey	New Jersey City University	Jersey City	HSI	No	Yes	7.8%	36.5%
New Mexico	Central New Mexico Community College	Albuquerque	HSI	No	Yes
	Eastern New Mexico University	Portales	HSI	No	Yes	10.7%	24.1%
	New Mexico Highlands University	Las Vegas	HSI	No	Yes	3.2%	19.0%
	New Mexico State University	Las Cruces	HSI	Yes (B&A)	No	12.6%	44.7%
	Northern New Mexico College	Espanola	HSI	No	Yes
	University of New Mexico-Main Campus	Albuquerque	HSI	Yes (B&A)	No	12.3%	44.0%
	Western New Mexico University	Silver city	HSI	No	Yes	7.6%	17.5%
New York	College of Mount Saint Vincent	Bronx	HSI	No	Yes	46.8%	65.6%
	CUNY Bronx Community College	Bronx	HSI	No	Yes
	Queensborough Community College	New York	HSI	No	Yes
North Carolina	Fayetteville State University	Fayetteville	HBCU	Yes (B)	No	11.6%	34.1%
	North Carolina A&T State University	Greensboro	HBCU	Yes (B&A)	No	15.1%	38.3%
	North Carolina Central University	Durham	HBCU	Yes (B)	No	18.0%	38.3%
	Winston-Salem State University	Winston-Salem	HBCU	Yes (B)	No	13.1%	35.6%
Oklahoma	Langston University	Langston	HBCU	No	Yes
Puerto Rico	Universidad Del Turabo	Gurabo	HSI	Yes (B)	No	1.0%	...
	University of Puerto Rico in Ponce	Ponce	HSI	No	Yes
	University of Puerto Rico-Aguadilla	Ramey	HSI	No	Yes
	University of Puerto Rico-Arecibo	Arecibo	HSI	No	Yes

Last revised: 10 December 2013



STATE	NAME OF INSTITUTION	CITY	TYPE	AACSB ACCREDITED	ACBSP ACCREDITED	GRAD. RATE (4-yr)	GRAD. RATE (6-yr)
	University of Puerto Rico-Bayamon	Bayamon	HSI	No	Yes
	University of Puerto Rico-Cayey	Cayey	HSI	No	Yes
South Carolina	Allen University	Columbia	HBCU	No	Yes	2.0%	8.2%
	Benedict College	Columbia	HBCU	No	Yes	11.4%	27.5%
	Claflin University	Orangeburg	HBCU	No	Yes	30.4%	46.0%
	Denmark Technical College	Denmark	HBCU	No	Yes
	Morris College	Sumter	HBCU	No	Yes	8.2%	25.0%
	South Carolina State University	Orangeburg	HBCU	Yes (B)	No	17.4%	39.3%
	Voorhees College	Denmark	HBCU	No	Yes	11.2%	28.2%
Tennessee	Tennessee State University	Nashville	HBCU	Yes (B)	No	10.3%	33.4%
Texas	Austin Community College	Cedar Park	HSI	No	Yes
	Huston-Tillotson University	Austin	HBCU	No	Yes	11.5%	24.2%
	Jarvis Christian College	Hawkins	HBCU	No	Yes	0.0%	28.6%
	Our Lady of the Lake University	San Antonio	HSI	No	Yes	13.9%	31.9%
	Prairie View A&M University	Prairie View	HBCU	Yes (B)	No	9.9%	31.7%
	South Texas College	McAllen	HSI	No	Yes
	St Mary's University	San Antonio	HSI	Yes (B)	No	34.3%	59.8%
	Texas A & M International University	Laredo	HSI	Yes (B)	No	15.8%	39.8%
	Texas A & M University-Corpus Christi	Corpus Christi	HSI	Yes (B&A)	No	17.0%	37.6%
	Texas A & M University-Kingsville	Kingsville	HSI	No	Yes	10.8%	36.6%
	Texas Lutheran University	Seguin	HSI	No	Yes	26.3%	46.1%

Last revised: 10 December 2013



STATE	NAME OF INSTITUTION	CITY	TYPE	AACSB ACCREDITED	ACBSP ACCREDITED	GRAD. RATE (4-yr)	GRAD. RATE (6-yr)
	Texas Southern University	Houston	HBCU	Yes (B)	No	5.9%	13.3%
	Texas State University	San Marcos	HSI	Yes (B)	No	24.8%	55.4%
	The University of Texas at Brownsville	Brownsville	HSI	Yes (B)	No	3.7%	19.6%
	The University of Texas at El Paso	El Paso	HSI	Yes (B&A)	No	7.6%	35.5%
	The University of Texas at San Antonio	San Antonio	HSI	Yes (B&A)	No	7.5%	26.6%
	The University of Texas-Pan American	Edinburg	HSI	Yes (B)	No	13.3%	35.5%
	University of Houston	Houston	HSI	Yes (B&A)	No	14.8%	45.7%
	University of Houston-Clear Lake	Houston	HSI	Yes (B&A)	No
	University of Houston-Downtown	Houston	HSI	Yes (B)	No	1.0%	12.4%
	University of Houston-Victoria	Victoria	HSI	Yes (B)	No
	University of North Texas-Dallas	Dallas	HSI	Yes (B)	No
	University of the Incarnate Word	San Antonio	HSI	No	Yes	13.5%	37.9%
Virginia	Norfolk State University	Norfolk	HBCU	Yes (B)	No	11.5%	34.5%
	Virginia State University	Petersburg	HBCU	Yes (B)	No	24.4%	41.3%
	Virginia Union University	Richmond	HBCU	No	Yes	18.1%	31.8%
West Virginia	Bluefield State College	Bluefield	HBCU	No	Yes	5.8%	12.4%
	West Virginia State University	Kanawha County	HBCU	No	Yes	5.4%	22.7%

Notes: (a) In order for a student to sit for the CPA exam, they must have attended an institution accredited by the ACBSP or by the AACSB in Business (denoted as (B) above) or Business/Accounting (denoted as (B&A) above). Institutions accredited in only business lack the additional accreditation, but this does not deny students eligibility for the exam. (b) Information regarding graduation rates from individual accounting programs is not generally published, so the overall graduation rate for each institution is provided.

